

**GENERAL NOTES**

- A. ALL DIMENSIONS ARE FROM FACE OF STUD, OR FACE OF MASONRY. ANY DIMENSIONS NOT SHOWN OR DEEMED QUESTIONABLE ARE TO BE VERIFIED BY ARCHITECT/DESIGNER. DO NOT SCALE DRAWINGS.
- B. PROVIDE WOOD BLOCKING SUPPORTS AS REQUIRED FOR ALL SURFACE MOUNTED ITEMS.
- C. COORDINATE WORK OF THIS TRADE WITH OTHER TRADES.
- D. DOOR AND FRAME NUMBERS CORRESPOND TO ROOM NUMBERS. WHERE MORE THAN ONE DOOR OCCURS IN A ROOM, A SUFFIX HAS BEEN ADDED (I.E. 100A). SEE DIVISION 500 DRAWINGS FOR DOOR SCHEDULE.
- E. PROVIDE MISCELLANEOUS METAL SUPPORT FOR ALL CEILING SUSPENDED ITEMS.
- F. APPLY SEALANT AT ALL JUNCTURES BETWEEN DIFFERENT MATERIALS (I.E. STOREFRONT AND PRECAST).
- G. APPLY SEALANT AT ALL PLUMBING FIXTURES AT JUNCTURE WITH WALL.
- H. APPLY SEALANT AT ALL COUNTERTOPS AND BACKSPLASHES AT JUNCTURE WITH WALL.
- I. ALL STEEL STUDS ARE TO BE BRACED ACCORDING TO MANUFACTURER'S LIMITING HEIGHT L240.
- J. ALL INTERIOR WALLS SHALL BE MARKED IN PLACE PRIOR TO FRAMING FOR ARCHITECT/DESIGNER TO REVIEW.
- K. ALL DOORS MUST BE INSTALLED WITH AT LEAST THE MINIMUM MANEUVERING CLEARANCES AT THE DOOR APPROACH PER THE MOST CURRENT AMERICANS WITH DISABILITIES ACT.
- L. COLUMNS/PIERS ARE TO BE WALL TYP "W1" TYP, AND ARE TO EXTEND 6" ABOVE FUTURE CEILING UNLESS NOTED OTHERWISE.
- M. PROVIDE TAPER INSULATED CRICKETS AS REQUIRED AT ALL ROOF MOUNTED ITEMS & MISC. PENETRATION TO ACHIEVE POSITIVE DRAINAGE.
- N. PROVIDE TPO WALKWAY PADS AROUND ALL ROOF TOP UNITS AND ALONG A PATH FROM ALL ROOF TOP UNITS TO THE ROOF ACCESS OPENING.

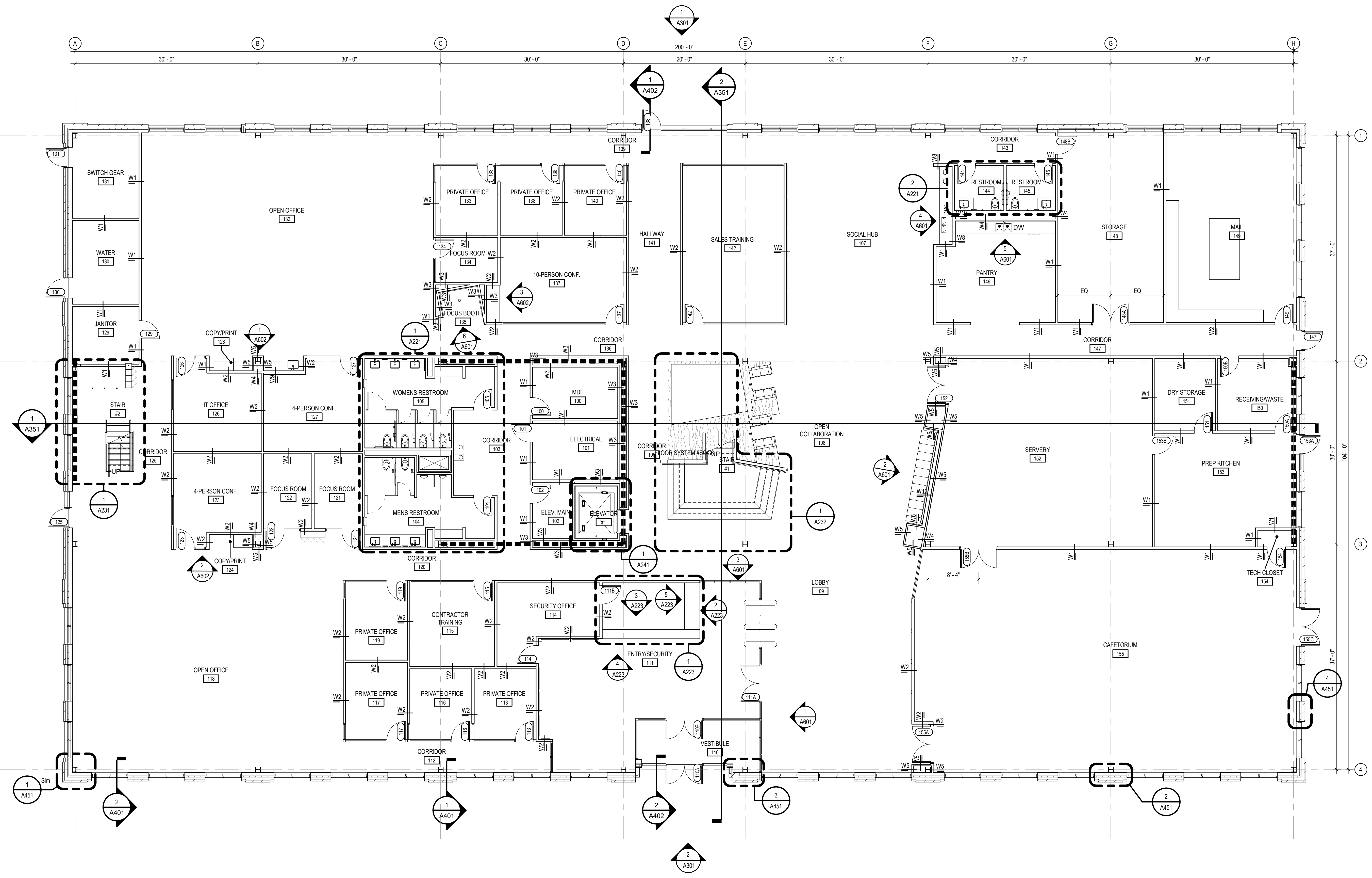
**PLAN NOTES**

- 1. ALIGN FINISH FACES.
- 2. STANDARD ROOF DRAIN LEADER LOCATION.
- 3. JANITORS SINK: PROVIDE FIBERGLASS REINFORCED PLASTIC PANEL FROM TOP OF SINK TO BOTTOM OF FAUCET ON BOTH WALLS ADJACENT TO THE SINK. PROVIDE 30' LONG FLEXIBLE HOSE AND HOSE CLAMP. SEE PLUMBING DRAWINGS FOR ADDITIONAL INFORMATION.
- 4. SEMI-RECESSED FIRE EXTINGUISHER CABINET AND FIRE EXTINGUISHER. MOUNT TOP OF CABINET AT +8" A.F.F.
- 5. WALL MOUNTED FIRE EXTINGUISHER.
- 6. CARD READER LOCATION.
- 7. PROVIDE 3/4" FIRE RETARDANT PL. WOOD PHONE BOARD. PAINT WITH FIRE RETARDANT PAINT TO MATCH ADJACENT SURFACE.

**WALL TYPES**

- NOTES: 1. SEE REFLECTED CEILING PLANS FOR CONSTRUCTED WALL HEIGHT.  
2. PROVIDE MOISTURE RESISTANT GYPSUM WALL BOARD ON ALL WET AREA WALLS.  
3. PROVIDE FIRE RESISTIVE RATED GYPSUM WALL BOARD AT ALL RATED ASSEMBLIES TO MEET ASSEMBLY REQUIREMENTS.  
4. PROVIDE FIRE RESISTIVE JOINT SYSTEMS EQUAL TO WALL RATING AT ALL HEAD AND FLOOR INTERSECTIONS WITH RATED ASSEMBLIES.

WS	SEE WALL SECTIONS FOR WALL CONSTRUCTION.
W1	3-5/8" 25 GAUGE METAL STUDS @ 16" O.C. WITH 5/8" GYPSUM WALL BOARD EACH SIDE.
W2	3-5/8" 25 GAUGE METAL STUDS @ 16" O.C. WITH 5/8" GYPSUM WALL BOARD EACH SIDE AND (1) LAYER ROCK WOOL SOUND ATTENUATION BLANKETS EACH STUD CAVITY.
W3	3-5/8" 25 GAUGE METAL STUDS @ 16" O.C. WITH 5/8" GYPSUM WALL BOARD ONE SIDE.
W4	3-5/8" 25 GAUGE METAL STUDS @ 16" O.C. WITH 5/8" GYPSUM WALL BOARD ONE SIDE AND (1) LAYER ROCK WOOL SOUND ATTENUATION BLANKETS EACH STUD CAVITY.
W5	2-1/2" 25 GAUGE METAL STUDS @ 16" O.C. WITH 5/8" GYPSUM WALL BOARD ONE SIDE.
W6	4" 25 GAUGE SHAFTWALL METAL STUDS @ 24" O.C. WITH 1" GYPSUM LINER PANEL ONE SIDE AND (2) LAYER 5/8" GYPSUM WALL BOARD ONE SIDE. (2 HR RATED UL-415 OR UL-417).
W7	4" 25 GAUGE SHAFTWALL METAL STUDS @ 24" O.C. WITH 1" GYPSUM LINER PANEL ONE SIDE AND (1) LAYER 5/8" GYPSUM WALL BOARD ONE SIDE. (1 HR RATED UL-415 OR UL-417).
W8	6" 25 GAUGE SHAFTWALL METAL STUDS @ 24" O.C. WITH 5/8" GYPSUM WALL BOARD EACH SIDE.
W9	6" 25 GAUGE SHAFTWALL METAL STUDS @ 24" O.C. WITH 5/8" GYPSUM WALL BOARD EACH SIDE AND (1) LAYER ROCK WOOL SOUND ATTENUATION BLANKETS EACH STUD CAVITY.
W10	6" 25 GAUGE SHAFTWALL METAL STUDS @ 24" O.C. WITH 5/8" GYPSUM WALL BOARD ONE SIDE.
W11	6" 25 GAUGE SHAFTWALL METAL STUDS @ 24" O.C. WITH 5/8" GYPSUM WALL BOARD ONE SIDE AND (1) LAYER ROCK WOOL SOUND ATTENUATION BLANKETS EACH STUD CAVITY.



1  
A201  
FIRST FLOOR PLAN  
SCALE: 1/8" = 1'-0"  
NORTH

**GENERAL NOTES**

- A. ALL DIMENSIONS ARE FROM FACE OF STUD, OR FACE OF MASONRY. ANY DIMENSIONS NOT SHOWN OR DEEMED QUESTIONABLE ARE TO BE VERIFIED BY ARCHITECT/DESIGNER. DO NOT SCALE DRAWINGS.
- B. PROVIDE WOOD BLOCKING SUPPORTS AS REQUIRED FOR ALL SURFACE MOUNTED ITEMS.
- C. COORDINATE WORK OF THIS TRADE WITH OTHER TRADES.
- D. DOOR AND FRAME NUMBERS CORRESPOND TO ROOM NUMBERS. WHERE MORE THAN ONE DOOR OCCURS IN A ROOM, A SUFFIX HAS BEEN ADDED (I.E. 100A). SEE DIVISION 500 DRAWINGS FOR DOOR SCHEDULE.
- E. PROVIDE MISCELLANEOUS METAL SUPPORT FOR ALL CEILING SUSPENDED ITEMS.
- F. APPLY SEALANT AT ALL JUNCTURES BETWEEN DIFFERENT MATERIALS (I.E. STOREFRONT AND PRECAST).
- G. APPLY SEALANT AT ALL PLUMBING FIXTURES AT JUNCTURE WITH WALL.
- H. APPLY SEALANT AT ALL COUNTERTOPS AND BACKSPLASHES AT JUNCTURE WITH WALL.
- I. ALL STEEL STUDS ARE TO BE BRACED ACCORDING TO MANUFACTURER'S LIMITING HEIGHT L240.
- J. ALL INTERIOR WALLS SHALL BE MARKED IN PLACE PRIOR TO FRAMING FOR ARCHITECT/DESIGNER TO REVIEW.
- K. ALL DOORS MUST BE INSTALLED WITH AT LEAST THE MINIMUM MANEUVERING CLEARANCES AT THE DOOR APPROACH PER THE MOST CURRENT AMERICANS WITH DISABILITIES ACT.
- L. COLUMNS/PIERS ARE TO BE WALL TYP "W5" TYP, AND ARE TO EXTEND 6" ABOVE FUTURE CEILING UNLESS NOTED OTHERWISE.
- M. PROVIDE TAPER INSULATED CRICKETS AS REQUIRED AT ALL ROOF MOUNTED ITEMS & MISC. PENETRATION TO ACHIEVE POSITIVE DRAINAGE.
- N. PROVIDE TPO WALKWAY PADS AROUND ALL ROOF TOP UNITS AND ALONG A PATH FROM ALL ROOF TOP UNITS TO THE ROOF ACCESS OPENING.

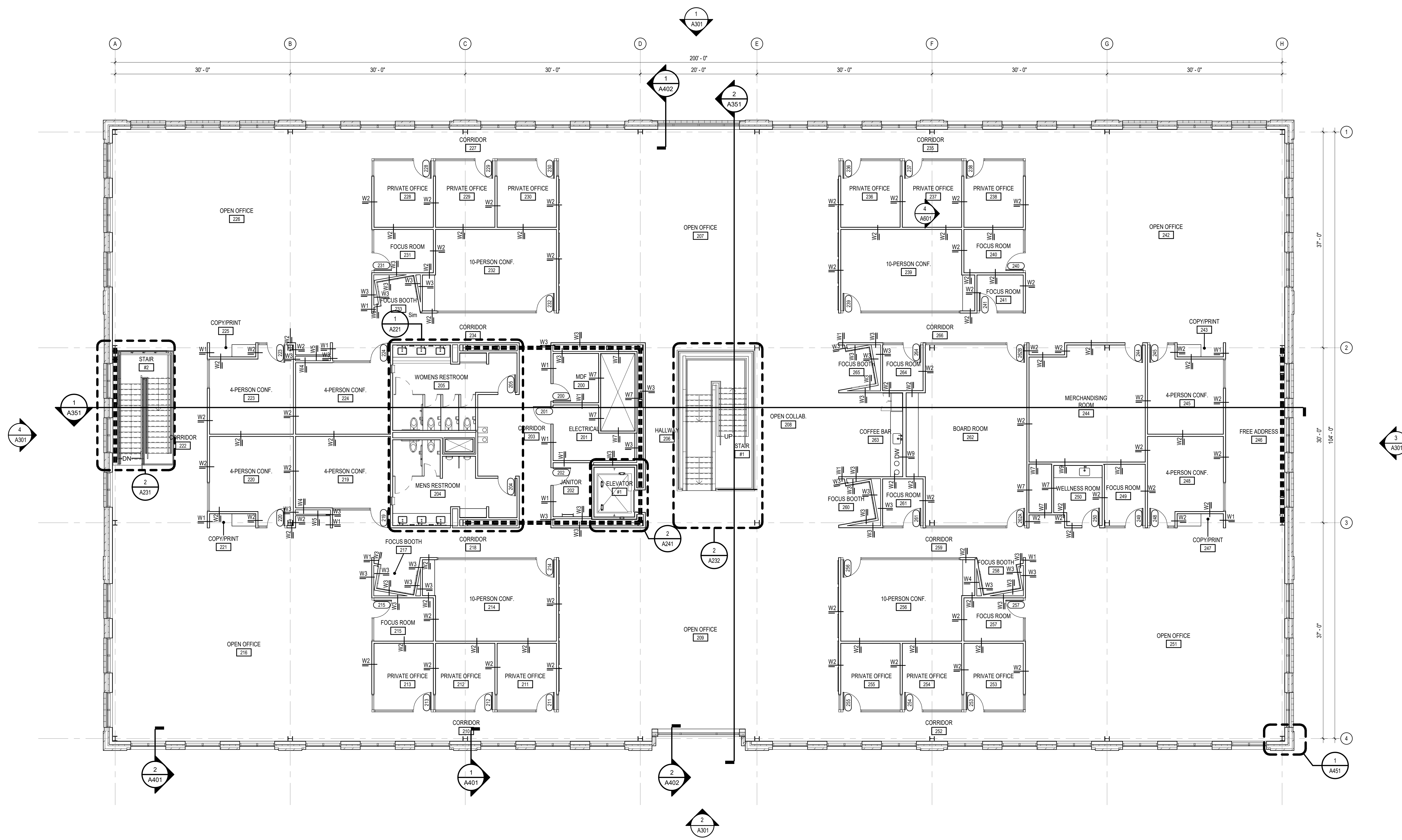
**PLAN NOTES**

- 1. ALIGN FINISH FACES.
- 2. STANDARD ROOF DRAIN LEADER LOCATION.
- 3. JANITORS SINK: PROVIDE FIBERGLASS REINFORCED PLASTIC PANEL FROM TOP OF SINK TO BOTTOM OF FAUCET ON BOTH WALLS ADJACENT TO THE SINK. PROVIDE 30' LONG FLEXIBLE HOSE AND HOSE CLAMP. SEE PLUMBING DRAWINGS FOR ADDITIONAL INFORMATION.
- 4. SEMI-RECESSED FIRE EXTINGUISHER CABINET AND FIRE EXTINGUISHER. MOUNT TOP OF CABINET AT +8' A.F.F.
- 5. WALL MOUNTED FIRE EXTINGUISHER.
- 6. CARD READER LOCATION.
- 7. PROVIDE 3/4" FIRE RETARDANT PL. WOOD PHONE BOARD. PAINT WITH FIRE RETARDANT PAINT TO MATCH ADJACENT SURFACE.

**WALL TYPES**

- NOTES: 1. SEE REFLECTED CEILING PLANS FOR CONSTRUCTED WALL HEIGHT.  
2. PROVIDE MOISTURE RESISTANT GYPSUM WALL BOARD ON ALL WET AREA WALLS.  
3. PROVIDE FIRE RESISTIVE RATED GYPSUM WALL BOARD AT ALL RATED ASSEMBLIES TO MEET ASSEMBLY REQUIREMENTS.  
4. PROVIDE FIRE RESISTIVE JOINT SYSTEMS EQUAL TO WALL RATING AT ALL HEAD AND FLOOR INTERSECTIONS WITH RATED ASSEMBLIES.

WS	SEE WALL SECTIONS FOR WALL CONSTRUCTION.
W1	3-5/8" 25 GAUGE METAL STUDS @ 16" O.C. WITH 5/8" GYPSUM WALL BOARD EACH SIDE.
W2	3-5/8" 25 GAUGE METAL STUDS @ 16" O.C. WITH 5/8" GYPSUM WALL BOARD EACH SIDE AND (1) LAYER ROCK WOOL SOUND ATTENUATION BLANKETS EACH STUD CAVITY.
W3	3-5/8" 25 GAUGE METAL STUDS @ 16" O.C. WITH 5/8" GYPSUM WALL BOARD ONE SIDE.
W4	3-5/8" 25 GAUGE METAL STUDS @ 16" O.C. WITH 5/8" GYPSUM WALL BOARD ONE SIDE AND (1) LAYER ROCK WOOL SOUND ATTENUATION BLANKETS EACH STUD CAVITY.
W5	2-1/2" 25 GAUGE METAL STUDS @ 16" O.C. WITH 5/8" GYPSUM WALL BOARD ONE SIDE.
W6	4" 25 GAUGE SHAFTWALL METAL STUDS @ 24" O.C. WITH 1" GYPSUM LINER PANEL ONE SIDE AND (2) LAYER 5/8" GYPSUM WALL BOARD ONE SIDE. (2 HR RATED UL-415 OR UL-417).
W7	4" 25 GAUGE SHAFTWALL METAL STUDS @ 24" O.C. WITH 1" GYPSUM LINER PANEL ONE SIDE AND (1) LAYER 5/8" GYPSUM WALL BOARD ONE SIDE. (1 HR RATED UL-415 OR UL-417).
W8	6" 25 GAUGE SHAFTWALL METAL STUDS @ 24" O.C. WITH 5/8" GYPSUM WALL BOARD EACH SIDE.
W9	6" 25 GAUGE SHAFTWALL METAL STUDS @ 24" O.C. WITH 5/8" GYPSUM WALL BOARD EACH SIDE AND (1) LAYER ROCK WOOL SOUND ATTENUATION BLANKETS EACH STUD CAVITY.
W10	6" 25 GAUGE SHAFTWALL METAL STUDS @ 24" O.C. WITH 5/8" GYPSUM WALL BOARD ONE SIDE.
W11	6" 25 GAUGE SHAFTWALL METAL STUDS @ 24" O.C. WITH 5/8" GYPSUM WALL BOARD ONE SIDE AND (1) LAYER ROCK WOOL SOUND ATTENUATION BLANKETS EACH STUD CAVITY.



**1 SECOND FLOOR PLAN**  
SCALE: 1/8" = 1'-0"

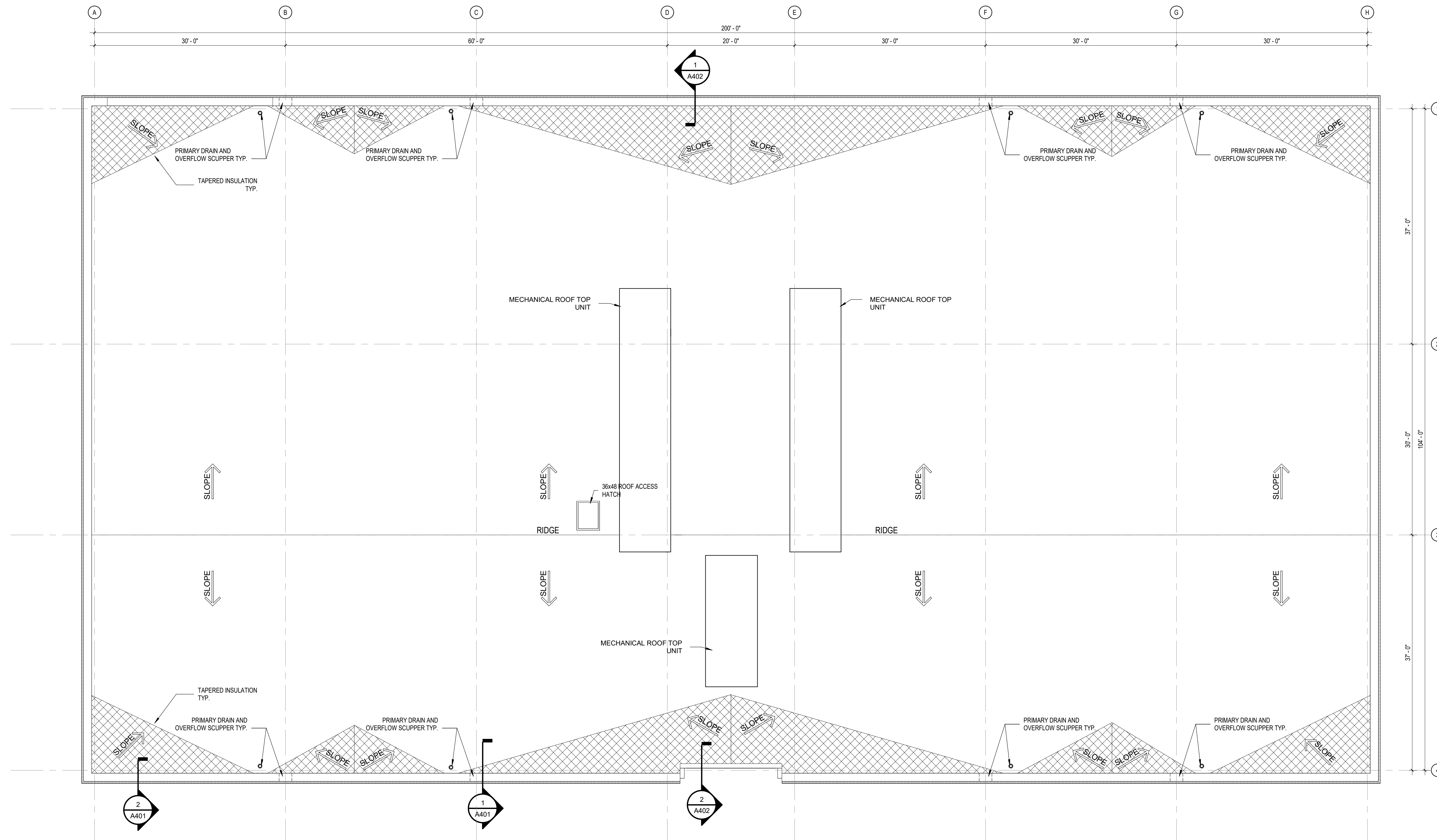


**GENERAL NOTES**

- A. ALL DIMENSIONS ARE FROM FACE OF STUD, OR FACE OF MASONRY. ANY DIMENSIONS NOT SHOWN OR DEEMED QUESTIONABLE ARE TO BE VERIFIED BY ARCHITECT/DESIGNER. DO NOT SCALE DRAWINGS.
- B. PROVIDE WOOD BLOCKING SUPPORTS AS REQUIRED FOR ALL SURFACE MOUNTED ITEMS.
- C. COORDINATE WORK OF THIS TRADE WITH OTHER TRADES.
- D. DOOR AND FRAME NUMBERS CORRESPOND TO ROOM NUMBERS. WHERE MORE THAN ONE DOOR OCCURS IN A ROOM, A SUFFIX HAS BEEN ADDED (I.E. 100A). SEE DIVISION 500 DRAWINGS FOR DOOR SCHEDULE.
- E. PROVIDE MISCELLANEOUS METAL SUPPORT FOR ALL CEILING SUSPENDED ITEMS.
- F. APPLY SEALANT AT ALL JUNCTURES BETWEEN DIFFERENT MATERIALS (I.E. STOREFRONT AND PRECAST).
- G. APPLY SEALANT AT ALL PLUMBING FIXTURES AT JUNCTURE WITH WALL.
- H. APPLY SEALANT AT ALL COUNTERTOPS AND BACKSPLASHES AT JUNCTURE WITH WALL.
- I. ALL STEEL STUDS ARE TO BE BRACED ACCORDING TO MANUFACTURER'S LIMITING HEIGHT L240.
- J. ALL INTERIOR WALLS SHALL BE MARKED IN PLACE PRIOR TO FRAMING FOR ARCHITECT/DESIGNER TO REVIEW.
- K. ALL DOORS MUST BE INSTALLED WITH AT LEAST THE MINIMUM MANEUVERING CLEARANCES AT THE DOOR APPROACH PER THE MOST CURRENT AMERICANS WITH DISABILITIES ACT.
- L. COLUMN WRAPS ARE TO BE WALL TYP "W5" TYP. AND ARE TO EXTEND 6" ABOVE FUTURE CEILING UNLESS NOTED OTHERWISE.
- M. PROVIDE TAPERED INSULATED CRICKETS AS REQUIRED AT ALL ROOF MOUNTED ITEMS & MISC. PENETRATION TO ACHIEVE POSITIVE DRAINAGE.
- N. PROVIDE TPO WALKWAY PADS AROUND ALL ROOF TOP UNITS AND ALONG A PATH FROM ALL ROOF TOP UNITS TO THE ROOF ACCESS OPENING.

**ROOF PLAN NOTES**

- 1. STANDARD ROOF DRAIN LOCATION.
- 2. OVERFLOW SCUPPER LOCATION.
- 3. 3'-0" X 3'-6" ROOF HATCH, COORDINATE EXACT LOCATION WITH STRUCTURAL DRAWINGS.
- 4. ROOF TOP MECHANICAL UNIT OR EXHAUST FAN LOCATION. SEE MECHANICAL DRAWINGS FOR ADDITIONAL INFORMATION.
- 5. HATCH INDICATES AREA OF TAPERED INSULATION TO ACHIEVE POSITIVE DRAINAGE.
- 6. ROOFTOP WALKWAY ACCESS PADS BY ROOFING MANUFACTURER.
- 7. ROOFTOP AREA RESERVED FOR FUTURE SOLAR PANELS. 40% MINIMUM OF ROOF AREA.
- 8. PROVIDE CONCRETE PAD UNDERNEATH ROOFTOP UNIT FOR ACOUSTICAL CONTROL.



**1 ROOF PLAN**  
A203 SCALE: 1/8" = 1'-0"  
NORTH

**SAINT-GOBAIN**  
pure development  
**CSO**  
8831 Keystone Crossing, Indianapolis, IN 46240  
317.287.7800 | CSO@csinet.com  
© 2021 CSO Architects, Inc. All Rights Reserved.

**DPR**  
CONSTRUCTION

PROJECT:  
**SAINT GOBBIN  
OFFICE BUILDING  
100 NEW BOND STREET  
WORCESTER, MA**

**SCOPE DRAWINGS:**  
These drawings indicate the general scope of the project. The drawings are not intended to be a contract document. The drawings are not necessarily complete or accurate as shown. The drawings are not intended to be a contract document. The drawings are not necessarily complete or accurate as shown. The drawings are not intended to be a contract document. The drawings are not necessarily complete or accurate as shown.

**REVISIONS:**

NO.	DATE	DESCRIPTION

ISSUE DATE	DRAWN BY	CHECKED BY
05/02/2024	BSC	DWG

DRAWING TITLE:  
**ROOF PLAN**

CERTIFIED BY:  
**PRELIMINARY/  
NOT FOR  
CONSTRUCTION**

DRAWING NUMBER:  
**A203**

PROJECT NUMBER:  
**2023034**



**GENERAL EXTERIOR MATERIAL NOTES**

1. ALL EXPOSED STEEL LINTELS TO RECEIVE A HIGH PERFORMANCE COATING. COLOR TO BE BLACK TO MATCH STOREFRONT/CURTAIN WALL FRAMING FINISH.
2. ALL EXTERIOR STEEL DOORS AND FRAMES TO RECEIVE A HIGH PERFORMANCE COATING. COLOR TO BE BLACK TO MATCH STOREFRONT/CURTAIN WALL FRAMING FINISH.
3. ALL EXTERIOR STOREFRONT DOORS AND CURTAIN WALL FRAMING TO BE PRE-FINISHED. 2 COAT FLOUROPOLYMER COATING. COLOR TO BE BLACK.
4. ALL METAL COMPOSITE MATERIAL PANELS TO BE PREFINISHED BLACK.

**MATERIAL NOTES**

- A. MODULAR BRICK VENEER
- B. TWO HIGH BRICK SOLDIER COURSE
- C. W-SHAPE STEEL BRICK LINTEL. PAINTED
- D. CAST STONE/LIMESTONE BAND.
- E. GLAZING IN ALUMINUM FRAMED WINDOW WALL SYSTEM.
- F. METAL COMPOSITE WALL PANEL.
- G. STEEL FRAMED ENTRY CANOPY.
- H. CAST STONE/LIMESTONE WINDOW SILL.

**GLAZING SCHEDULE**

1. REFERENCE WRITTEN SPECIFICATIONS FOR PERFORMANCE CRITERIA.
2. \*T\* SUFFIX INDICATES TEMPERED GLASS.
3. ALL UNHATCHED GLASS TO BE TYPE "A" VISION GLASS UNLESS NOTED OTHERWISE.

- TYPE "A" 1 1/2" INSULATED, TRIPLE PANE, GRAY TINTED LOW E VISION GLASS.
- TYPE "B" 1 1/2" INSULATED, TRIPLE PANE, GRAY TINTED SPANDREL GLASS.
- TYPE "C" 1" INSULATED, GRAY TINTED LOW E VISION GLASS.

**SAINT-GOBAIN**

pure development

**CSO**

8831 Keystone Crossing, Indianapolis, IN 46240  
317.847.7800 | CSO@csoc.net

© 2024 CSO Architects, Inc. All Rights Reserved.

**DPR CONSTRUCTION**

PROJECT:

**SAINT GOBAIN  
OFFICE BUILDING  
1 NEW BOND STREET  
WORCESTER, MA**

**SCOPE DRAWINGS:**

These drawings indicate the general scope of the project in terms of architectural design content, the delineation of site layout, mechanical and electrical systems. The drawings do not necessarily include or describe all work required for the performance and completion of the project. On the basis of the general scope indicated or described, the contractor shall furnish all items required for the proper execution and completion of the work.

**REVISIONS:**

NO.	DATE	DESCRIPTION

ISSUE DATE	DRAWN BY	CHECKED BY
05/06/2024	BSC	DWG

DRAWING TITLE:

**EXTERIOR ELEVATIONS**

CERTIFIED BY:

**PRELIMINARY/  
NOT FOR  
CONSTRUCTION**

DRAWING NUMBER

**A301**

PROJECT NUMBER

**2023034**





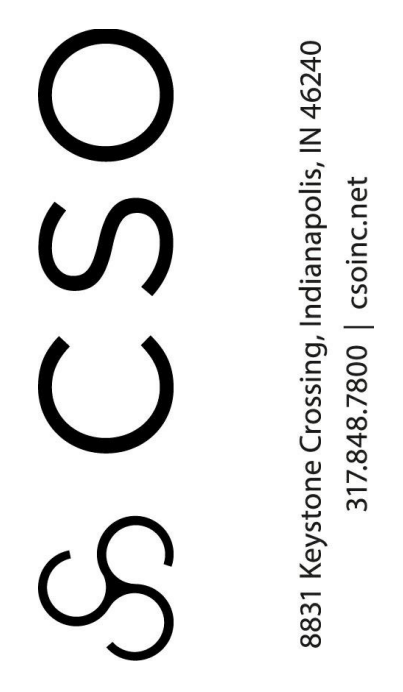
SOUTHEAST PERSPECTIVE




ENTRY PERSPECTIVE



SOUTHEAST CORNER PERSPECTIVE

8831 Keystone Crossing, Indianapolis, IN 46240  
 317.284.7800 | CSO@csd.net  
 © 2024 CSO Architects, Inc. All Rights Reserved.



PROJECT:  
**SAINT GOBAIN  
 OFFICE BUILDING  
 100 NEW BOND STREET  
 WORCESTER, MA**

**SCOPE DRAWINGS:**  
 These drawings indicate the general scope of the project. The drawings do not constitute a contract. The drawings are for informational purposes only and do not constitute a contract. The drawings do not constitute a contract. The drawings do not constitute a contract.

**REVISIONS:**

ISSUE DATE	DRAWN BY	CHECKED BY
05/02/2024	BSC	DWG

**DRAWING TITLE:**  
**PERSPECTIVE**

**CERTIFIED BY:**  
**PRELIMINARY/  
 NOT FOR  
 CONSTRUCTION**

**DRAWING NUMBER:**  
**A303**

**PROJECT NUMBER:**  
**2023034**